

Mop Selection Guide

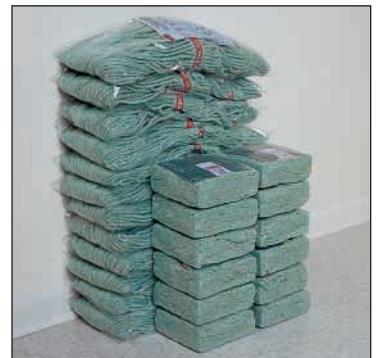
**Using the right mop
can help lower
maintenance
costs.**



Wide range of mop yarns, constructions and colors are designed for specific floor surfaces and tasks.



Effective dust control program can help cut cleaning costs.



Compact Mops require up to 66% less storage space than conventional mops.

Rubbermaid[®]
Commercial Products

Maximize your floor cleaning program with Rubbermaid® Wet Mops.



Rubbermaid® Wet Mops include a full range of yarn types, twists, styles and colors – even select yarns embedded with an antimicrobial agent – to fit your specific cleaning needs. Choose the right wet mop for the job, and you can potentially maximize the efficiency, performance and value of your work.

Fiber

Cotton Effective and economical for general floor cleaning in commercial and industrial applications. High absorbency allows fast floor drying. Susceptible to mildew that can rot mop yarn and reduce product life.

Cotton mops require a "break-in" period to remove natural oils. Failure to break in a new cotton mop greatly diminishes its absorbency during initial use.

How to break in a new cotton mop:

1. Fill a mop bucket with water (120°F - 140°F) and a correct dilution of cleaning solution.
2. Submerge mop in solution and agitate for two to three seconds.
3. Thoroughly wring out and rinse.
4. Repeat steps 2 and 3 five to ten times.

Blends Combine high on-floor performance with long product life. Cotton fibers provide high water absorption and retention for effective floor drying. Fibers such as rayon afford maximum water pickup and require no "break in" period. Synthetic fibers such as polyester give increased strength and long product life. Select blends feature a locked-in antimicrobial agent for extended product life.

Rayon Contains no pepper trash or oils. Used primarily in special applications such as floor finishing. While offering extremely high water pick up (up to seven times its dry weight), rayon has relatively low water retention, making it less effective for general purpose mopping.

Antimicrobial Microban® B.

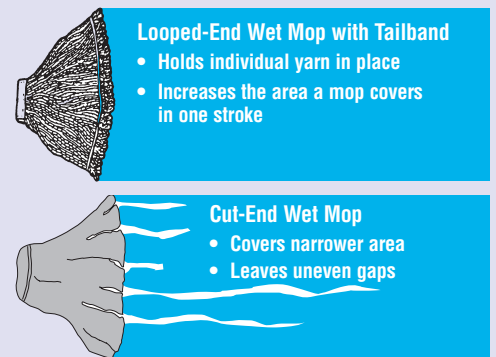
Select Rubbermaid® Wet Mops contain Microban® B, which provides product protection by inhibiting the growth of bacteria. This antimicrobial agent is inherent to the mop construction, so it's locked in to withstand repeated launderings for long-lasting performance.

Construction

Cut-end mops Economical for general purpose floor cleaning. Not launderable, so their product life is relatively short. Tend to "lint," lose strands and leave uneven gaps on floor surfaces.

Looped-end mops Unlike cut-end disposable mops, looped-end mops won't fray or unravel with use, which helps lower replacement costs and delivers increased performance. Can be laundered for long effectiveness and clean appearance. Tailband provides wide surface coverage. Mops evenly without leaving gaps.

Productivity: Comparing Mop Swaths



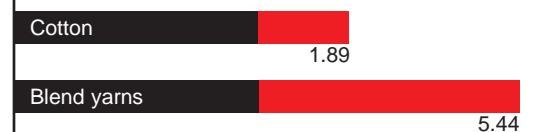
Mop and wringer size should match the user.

	Wringer	User/Mop Size
6127	Sideward Pressure (12-32 oz.)	S, M, L, XL
6124	Downward Pressure (8-16 oz.)	S
7575	Downward Pressure (16-32 oz.)	S, M, L, XL

Small (8-12 oz.)
Medium (16-24 oz.)
Large to X-Large (24-32 oz.)

A properly sized wet mop should match the size of the person who will be mopping (small, medium or large) and the mop wringer with which it will be used.

Absorption Comparison: cotton vs. premium blended yarn (after break-in)



Compares a mop's ability to absorb fluids. Measured in multiples of dry weight. For example, a 24-oz. premium blended yarn mop will absorb 5.44 times its weight, compared to 1.89 times for a cotton mop of the same dry weight.

Choosing the right mop helps increase productivity

Web Foot® Mops with Microban® Antimicrobial Protection

- Number one selling premium mop in the industry.
- Looped-end, open twist yarn reduces linting.
- Tailband allows the mop to cover more floor area per stroke, saving time and money.
- Microban “B” provides product protection by inhibiting the growth of bacteria.
- A balanced blend of cotton and synthetic fibers delivers up to three times the absorbency of cotton mops.
- Compact package design.
- Launderable for long product life.
- Available in blue, green, orange, and white. Color allows you to organize cleaning equipment by assigning different colors for different tasks.
- No break-in time needed.
- Available in regular and shrinkless.



Swinger Loop® Mops

- Looped-ends and tailband allow for greater floor coverage.
- 4-ply, balanced blend of cotton and synthetic yarn for absorbency and strength.
- Launderable for long product life.
- Compact package design.
- Available in blue, green and white to allow color coding by task.
- No break-in time needed. Mops are ready for immediate use.



Dura-Pro® Mops

- Economical, cut-end general purpose mop.
- 100% cotton or blended yarns for general purpose mopping.
- Rayon for finish application.
- Not recommended for laundering.



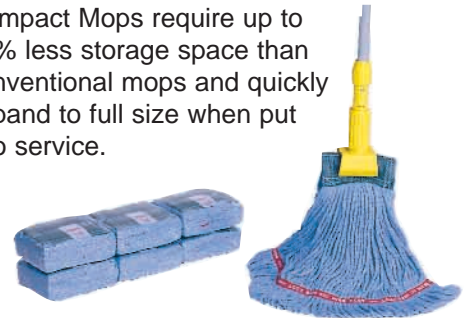
Value-Pro™ Mops

- Designed for limited or one-time use.
- 100% cotton for general purpose mopping.
- Rayon for finish application.
- Not recommended for laundering.



Rubbermaid® Compact Mops take the bulk out of storage.

Compact Mops require up to 66% less storage space than conventional mops and quickly expand to full size when put into service.



Innovative packaging helps solve problems related to storage and disposal of unwieldy mop cartons. Certified by the International Safe Transit Association to help improve the assurance of the safe arrival of Compact Mops at their destination.



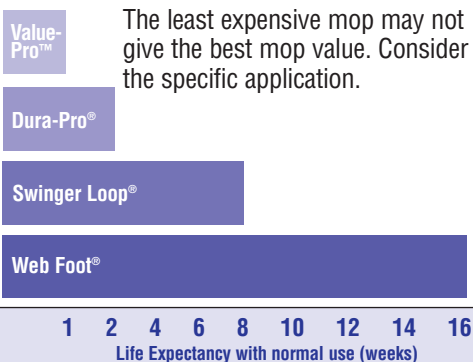
Wall-mounting mop dispenser, as shown, holds 16 small, 13 medium, nine large or eight extra-large wet mops.

Wet Mop Matrix

Market	Application Area	Product	Quality
Health Care	Wet Mopping	Web Foot® Shrinkless® Mop Web Foot® Mop Swinger Loop® Mop	Best Better Good
	Stripping Floors	Swinger Loop® Mop Super Stitch® Cotton Mop Dura-Pro® Cotton Mop	Best Better Good
	Finishing Floors	Finish System Gloss Pro™ Finish Mop Swinger Loop® or Web Foot® Finish Mop	Best Better Good
General Commercial (malls, hotels, factories, offices, schools, etc.)	Wet Mopping	Swinger Loop® or Super Stitch® Blend Mop Dura-Pro® Blend or All Pro™ Blend Mop Value Pro™ Cotton Mop	Best Better Good
	Stripping Floors	Super Stitch® Cotton Mop Dura-Pro® Cotton Mop Value Pro™ Cotton Mop	Best Better Good
	Finishing Floors	Finish System Gloss Pro™ Finish Mop Super Stitch® Finish Mop Value Pro® or Dura-Pro® Rayon Mop	Best Better Good Good
Fast Food	Wet Mopping (abrasive floors)	Hot™ Mops Synthetic Mop Super Stitch® Blend Mop Dura-Pro® Blend Mop	Best Better Good
Supermarkets Restaurants	Wet Mopping	Super Stitch® Blend Mop Dura-Pro® Blend or All Pro™ Blend Mop Value Pro™ Cotton Mop	Best Better Good
	Stripping Floors	Swinger Loop® Mop Dura-Pro® Cotton Mop Value Pro™ Cotton Mop	Best Better Good
	Finishing Floors	Finish System Gloss Pro™ Finish Mop Super Stitch® Finish Mop Value Pro® or Dura-Pro® Rayon Mop	Best Better Good Good

Cost: Longevity Comparison

Mop Construction



Basic care guidelines for wet mops:

- The use of fabric softeners is not recommended.
- Laundering equipment should be loaded to capacity.
- Use net bags when washing and drying.
- Follow recommendations on all product labels where provided.
- For optimum product life, the use of bleach is not recommended.

A good dust control program can keep your facility and your reputation clean.



If left unchecked, common dust will damage floor surfaces and carpets, trigger dust-related health problems among building occupants, collect on fixtures, equipment and furniture, and create a poor public impression. When dust gets out of control, it damages both your facility and your reputation.

Proper dust control can:

- **Help reduce cleaning time and labor.**
Always use correctly sized, properly treated dust mops.
- **Lessen the need for floor scrubbing and refinishing.**
Regularly scheduled dust mopping gets dust before it builds up on floors or becomes imbedded in carpets.
- **Cut down on airborne dust.**
Attack dust before it spreads to off-floor surfaces such as merchandise, equipment and fixtures that are more difficult and costly to clean.
- **Minimize costly restorative carpet cleaning.**
Simple dust control and routine vacuuming of high-traffic carpet areas can drastically reduce the need for more costly and labor-intensive cleaning procedures. Regular dust control is continuous damage control.

Dust Mop Matrix		
Market	Product	Quality
Health Care	Trapper® Mop Klean Kut™ Tufted Mop Kut-A-Way® Mop	Best Better Good
Factories	Kut-A-Way® Mop Castaway® Mop Select-A-Length™	Best Better Good
Malls	Klean Kut™ Tufted Mop Kut-A-Way® Mop Castaway® Mop	Best Better Good
Hotels	Klean Kut™ Tufted Mop Kut-A-Way® Mop Castaway® Mop	Best Better Good
Schools	Kut-A-Way® Mop Tuftaway™ Mop Select-A-Length™	Best Better Good
Restaurants	Kut-A-Way® Mop Tuftaway™ Mop Castaway® Mop	Best Better Good
Office Buildings	Klean Kut™ Tufted Mop Kut-A-Way® Mop Castaway® Mop	Best Better Good

The heart of dust control.

Dust control begins with the proper basic tools: dust mops, frames and handles and dust mop treatment. Choose the right type and size of dust control equipment and you'll save time and labor in the long term.

Construction

Looped-end dust mops.

Deliver high performance by trapping more dust and providing long product life. Looped-end yarns are designed to withstand demanding use and laundering without fraying, unraveling or linting.

Cut-end dust mops.

Although lower-priced cut-end dust mops may appear to be the more economical choice, their performance decreases as they fray, unravel and shed lint. Laundering them only increases these problems.

Launderable vs. disposable?

Launderable dust mops are constructed for durability and can be cleaned and retreated repeatedly for maximum performance. They cost more initially, but will save money in the long term by reducing replacement costs. If laundering facilities are not available in your operation, lower-cost disposable dust mops might give better value. If brushed out and retreated properly, better disposable dust mops can be effective for 500,000 square feet or more of dust control.

Products manufactured under a quality management system registered ISO 9002.

www.rubbermaidcommercial.com
©2000 Rubbermaid Commercial Products LLC
Winchester, VA 22601
Printed in U.S.A.

Wet Mop Selection Guide

No.	Product	Headband Size	No.	Product	Headband Size	No.	Product	Headband Size	No.	Product	Headband Size
Web Foot® Mops			Super Stitch® Mops (continued)			Dura-Pro® Mops (continued)			Flat Mop System		
A111-06	Sm. Wet Mop	1"	D252-06	Med. Blend	5"	F568	24 oz. Twister® Blend		BU20	Holder for Tab Style Mop	N/A
A112-06	Med. Wet Mop	1"	D253-06	Lg. Blend	5"	F569	32 oz. Twister® Blend		E056	Tab Style Mop, Antimicrobial	N/A
A113-06	Lg. Wet Mop	1"	D512-06	Med. Finish	1"	5973	24 oz. 4-Ply Cotton Cut End	1"	E057	Tab Style Mop, Blend	N/A
A151-06	Sm. Wet Mop	5"	D513-06	Lg. Finish	1"	Syntex™ 4-Ply Synthetic Mops			E305	Handle for BU20 Holder	N/A
A152-06	Med. Wet Mop	5"	D552-06	Med. Finish	5"	5976	16 oz.	1"	6164	Side Pressure Wringer Adapter Plate for 6127-01	N/A
A153-06	Lg. Wet Mop	5"	D553-06	Lg. Finish	5"	All-Pro™ Mops			Gloss Pro™ Finish Mops		
A211-06	Sm. Shrinkless	1"	D412-06	Med. Rayon	1"	E136	16 oz. Cotton	Universal	E058-06	18" l x 5" w Flat Finish	N/A
A212-06	Med. Shrinkless	1"	D413-06	Lg. Rayon	1"	E138	24 oz. Cotton	Universal	T200-06	Med. Finish	1"
A213-06	Lg. Shrinkless	1"	Dura-Pro® Mops			E139	32 oz. Cotton	Universal	T201-06	Lg. Finish	1"
A251-06	Sm. Shrinkless	5"	F116	16 oz. 4-Ply Cotton	1"	E236	16 oz. Blue Blend	Universal	Invader® Wet Mop Handles		
A252-06	Med. Shrinkless	5"	F117	20 oz. 4-Ply Cotton	1"	E238	24 oz. Blue Blend	Universal	H115	Hardwood, 54" l, Plastic Head	
A253-06	Lg. Shrinkless	5"	F118	24 oz. 4-Ply Cotton	1"	E239	32 oz. Blue Blend	Universal	H116	Hardwood, 60" l, Plastic Head	
A412-06	Med. Finish	1"	F119	32 oz. 4-Ply Cotton	1"	E436	16 oz. Rayon	Universal	H125	Aluminum, 54" l, Plastic Head	
A413-06	Lg. Finish	1"	F156	16 oz. 4-Ply Cotton	5"	E438	24 oz. Rayon	Universal	H126	Aluminum, 60" l, Plastic Head	
Swinger Loop® Mops			F157	20 oz. 4-Ply Cotton	5"	E439	32 oz. Rayon	Universal	H135	Vinyl-Covered Aluminum, 54" l, Plastic Head	
C111-06	Sm. Looped End	1"	F158	24 oz. 4-Ply Cotton	5"	Hot™ Mop Synthetic Mops			H136	Vinyl-Covered Aluminum, 60" l, Plastic Head	
C112-06	Med. Looped End	1"	F159	32 oz. 4-Ply Cotton	5"	F130	12 oz.	1"	H145	Fiberglass, 54" l, Plastic Head	
C113-06	Lg. Looped End	1"	F166	16 oz. 4-Ply Twister® Cotton		F131	16 oz.	1"	H146	Fiberglass, 60" l, Plastic Head	
C114-06	X-Lg. Looped End	1"	F167	20 oz. 4-Ply Twister® Cotton		F132	24 oz.	1"	H416	Stirrup, Steel Head	
C151-06	Sm. Looped End	5"	F168	24 oz. 4-Ply Twister® Cotton		F135	12 oz.	5"	H516	E-Z Change™ Hardwood, Steel Head	
C152-06	Med. Looped End	5"	F169	32 oz. 4-Ply Twister® Cotton		F136	16 oz.	5"	Gripper® Wet Mop Handles		
C153-06	Lg. Looped End	5"	F216	16 oz. 8-Ply Cotton	1"	F137	24 oz.	5"	H215	Hardwood, 54" l, Plastic Head	
C154-06	X-Lg. Looped End	5"	F217	20 oz. 8-Ply Cotton	1"	Clean Room Mops			H216	Hardwood, 60" l, Plastic Head	
C211-06	Sm. Shrinkless	1"	F218	24 oz. 8-Ply Cotton	1"	T300	Med.	5"	H225	Aluminum, 54" l, Plastic Head	
C212-06	Med. Shrinkless	1"	F219	32 oz. 8-Ply Cotton	1"	T301	Lg.	5"	H226	Aluminum, 60" l, Plastic Head	
C213-06	Lg. Shrinkless	1"	F416	16 oz. 4-Ply Rayon	1"	Value-Pro™ Mops			H235	Vinyl-Covered Aluminum, 54" l, Plastic Head	
C214-06	X-Lg. Shrinkless	1"	F417	20 oz. 4-Ply Rayon	1"	V116	#16 Cotton	1"	H236	Vinyl-Covered Aluminum, 60" l, Plastic Head	
C251-06	Sm. Shrinkless	5"	F418	24 oz. 4-Ply Rayon	1"	V117	#20 Cotton	1"	H245	Fiberglass, 54" l, Plastic Head	
C252-06	Med. Shrinkless	5"	F419	32 oz. 4-Ply Rayon	1"	V118	#24 Cotton	1"	H246	Fiberglass, 60" l, Plastic Head	
C253-06	Lg. Shrinkless	5"	F466	16 oz. Twister® Rayon		V119	#32 Cotton	1"	Twister® Wet Mop Handle		
C254-06	X-Lg. Shrinkless	5"	F467	20 oz. Twister® Rayon		V156	#16 Cotton	5"	H316	Wood, 60" l, Metal Cap	
C412-06	Med. Finish Looped End	1"	F468	24 oz. Twister® Rayon		V157	#20 Cotton	5"	Prolite® Mop Handles		
C413-06	Lg. Finish	1"	F469	32 oz. Twister® Rayon		V158	#24 Cotton	5"	6148	Fiberglass, 54" l	
Super Stitch® Mops			F516	16 oz. Blend	1"	V159	#32 Cotton	5"	6149	Fiberglass, 60" l	
D111-06	Sm. Cotton Looped End	1"	F517	20 oz. Blend	1"	Finish System			Compact Mop Dispenser		
D112-06	Med. Cotton Looped End	1"	F518	24 oz. Blend	1"	E050	Starter Kit	N/A	Q399	Compact Mop Dispenser	
D113-06	Lg. Cotton Looped End	1"	F519	32 oz. Blend	1"	E051	Finish Bucket	N/A			
D151-06	Sm. Cotton Looped End	5"	F556	16 oz. Blend	5"	E052	Finish Mop	N/A			
D152-06	Med. Cotton Looped End	5"	F557	20 oz. Blend	5"						
D153-06	Lg. Cotton Looped End	5"	F558	24 oz. Blend	5"						
D211-06	Sm. Blend	1"	F559	32 oz. Blend	5"						
D212-06	Med. Blend	1"	F566	16 oz. Twister® Blend							
D213-06	Lg. Blend	1"	F567	20 oz. Twister® Blend							
D251-06	Sm. Blend	5"									

Dust Mop Selection Guide

No.	Product	No.	Product	No.	Product	No.	Product
Select-A-Length™ Mops		Klean Kut™ Tufted Mops		Castaway® Mops		Snap-On Wire Dust Mop Frames (continued)	
M150	40' l x 5" w	J652	18" l x 5" w Mop	L152	18" l x 5" w	M253	24" l x 5" w
Trapper® Mops		J653	24" l x 5" w Mop	L153	24" l x 5" w	M255	36" l x 5" w
J151	12" l x 5" w	J653-67 Dust Mop Kit, Contains J653 Mop, M253 Frame & M116 Handle		L155	36" l x 5" w	M257	48" l x 5" w
J152	18" l x 5" w	J655	36" l x 5" w	L158	60" l x 5" w	M258	60" l x 5" w
J153	24" l x 5" w	J655-67 Dust Mop Kit, Contains J655 Mop, M255 Frame & M116 Handle		L159	72" l x 5" w	M259	72" l x 5" w
J155	36" l x 5" w	J657	48" l x 5" w Mop	Disposaduster® Mops		Snap-On Dust Mop Handles	
J157	48" l x 5" w	J657-67 Dust Mop Kit, Contains J657 Mop, M257 Frame & M116 Handle		L252	18" l x 5" w	M116	Hardwood, 60" l
Superstat™ Mops		Kut-A-Way® Mops		L253	24" l x 5" w	M136	Vinyl-Covered Hardwood, 60" l
J452	18" l x 5" w	K152	18" l x 5" w	L255	36" l x 5" w	M146	Fiberglass, 60" l
J453	24" l x 5" w	K153	24" l x 5" w	L257	48" l x 5" w	Wedge Mop System	
J455	36" l x 5" w	K155	36" l x 5" w	L252-44	18" l x 5" w	U110	Wood Handle with Metal Frame
J457	48" l x 5" w	K157	48" l x 5" w	L253-44	24" l x 5" w	U120	Trapper® Wedge Mop Head, Looped-End
Tuftaway™ Mops		K158	60" l x 5" w	L255-44	36" l x 5" w	U130	Kut-A-Way® Dust Mop Head
K352	18" l x 5" w	K159	72" l x 5" w	L257-44	48" l x 5" w	U130-67	Wedge Mop Kit, Contains U130 Mop, U110 Handle & Frame
K353	24" l x 5" w						
K355	36" l x 5" w						
K357	48" l x 5" w						