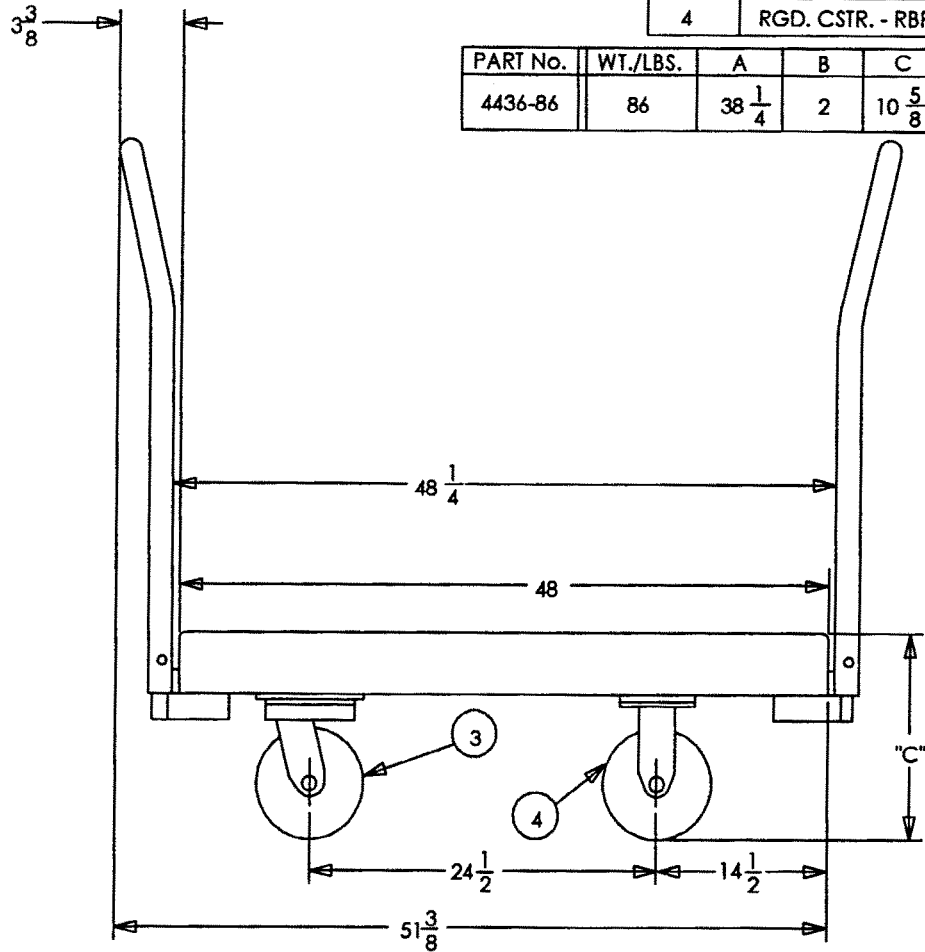
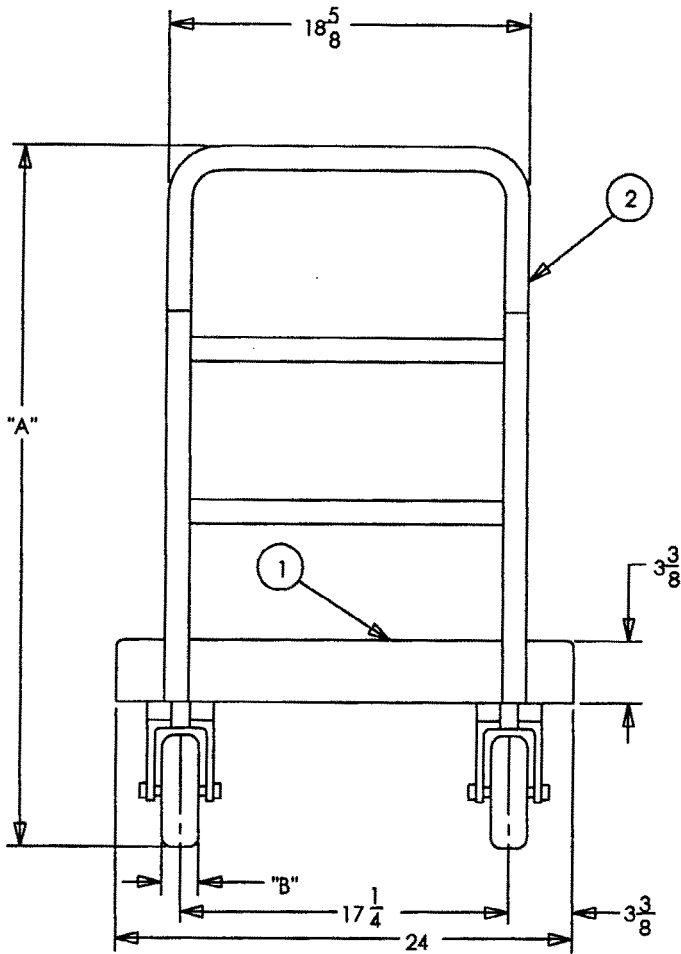


No.	Description/Materials
1	DECK - FOAMED PE
2	HANDLE - STEEL
3	SWVL. CSTR. - RBR / STL
4	RGD. CSTR. - RBR / STL

PART No.	WT./LBS.	A	B	C	CASTER	CAPACITY
4436-86	86	$38 \frac{1}{4}$	2	$10 \frac{5}{8}$	6" DIA.	1000 LBS.




total part wt. SEE CHART

capacity SEE CHART

agency approvals NSF, USDA

miscellaneous _____

Product Specifications

 RUBBERMAID COMMERCIAL PRODUCTS INC.

product name 24 x 48 PLATFORM TRUCK

product no. 4436-86 revision 0

product no. 4436-86